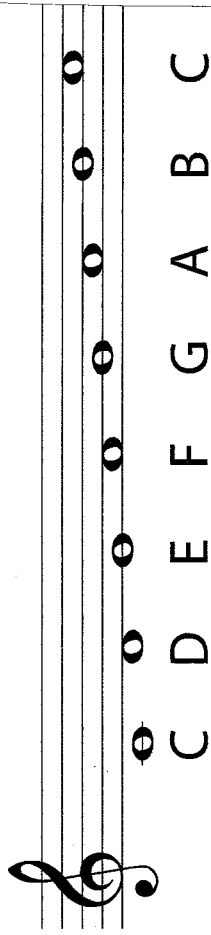
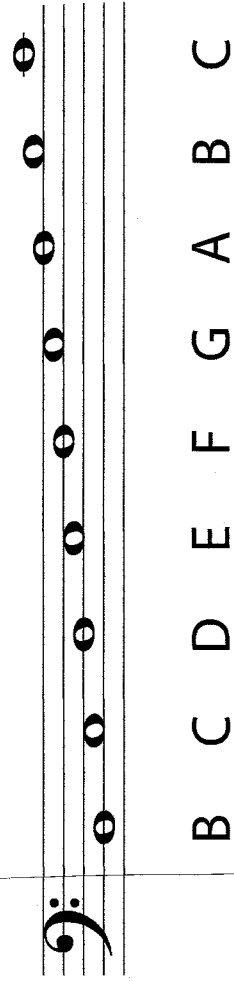


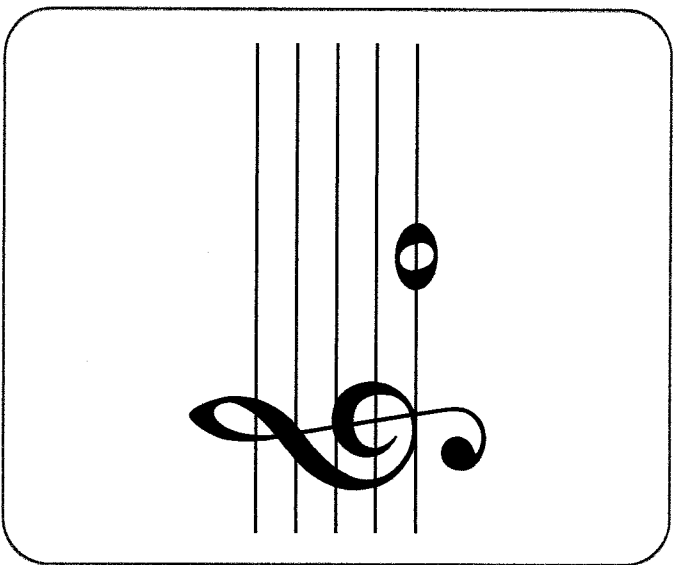
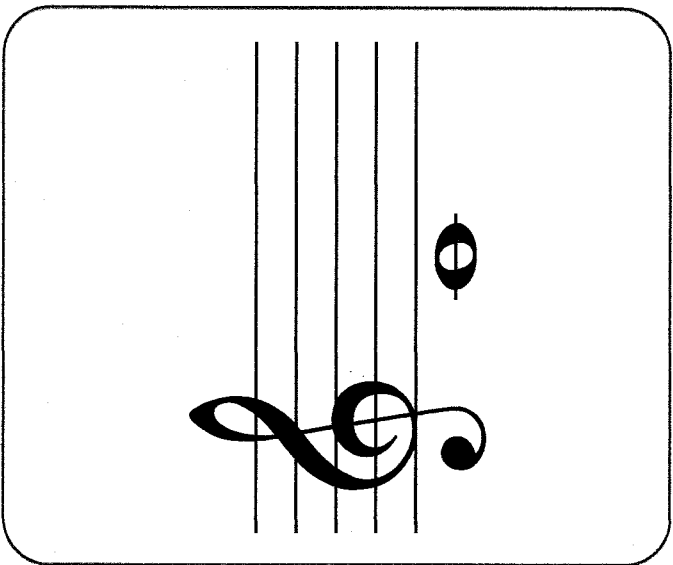
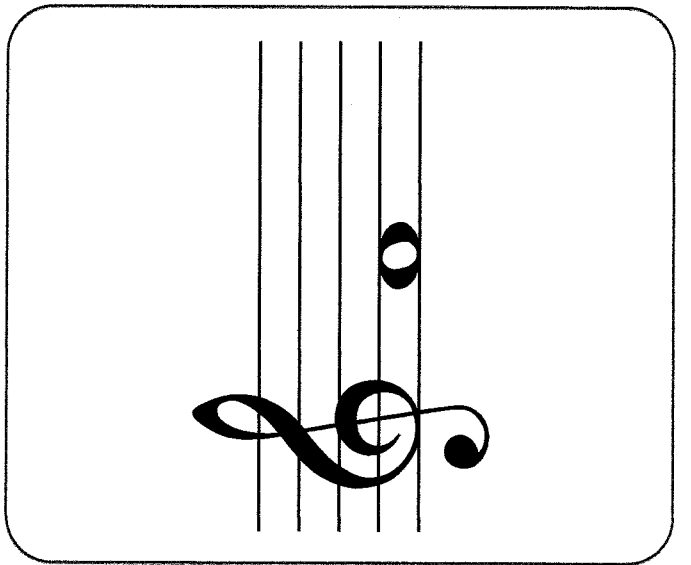
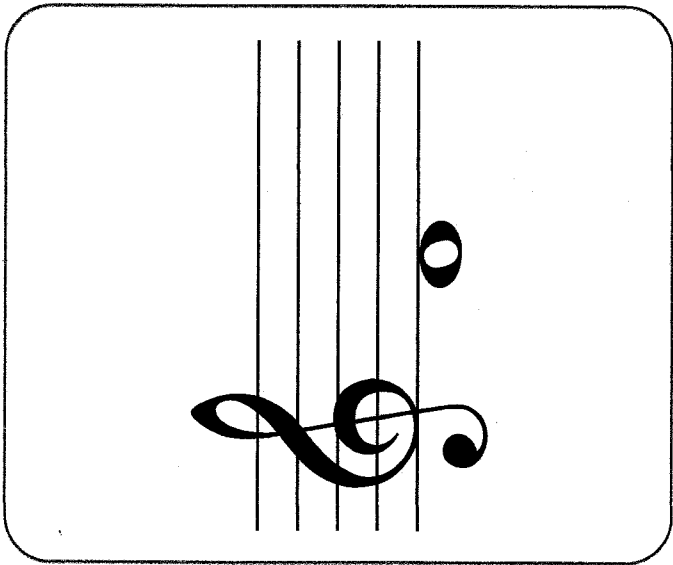
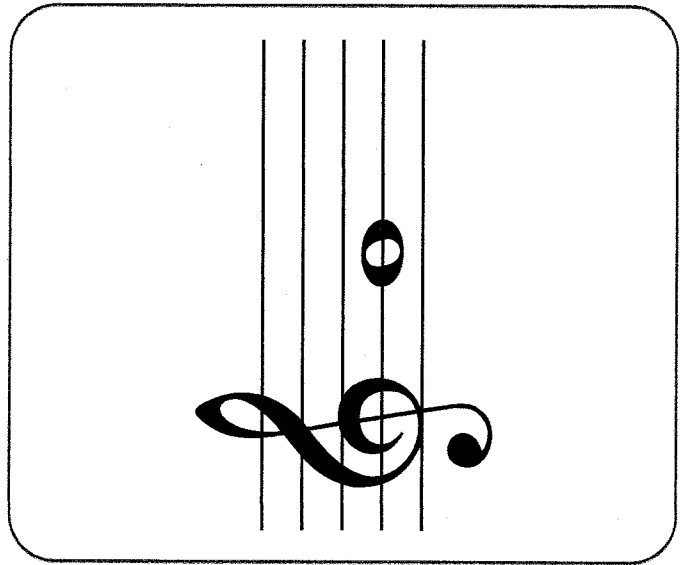
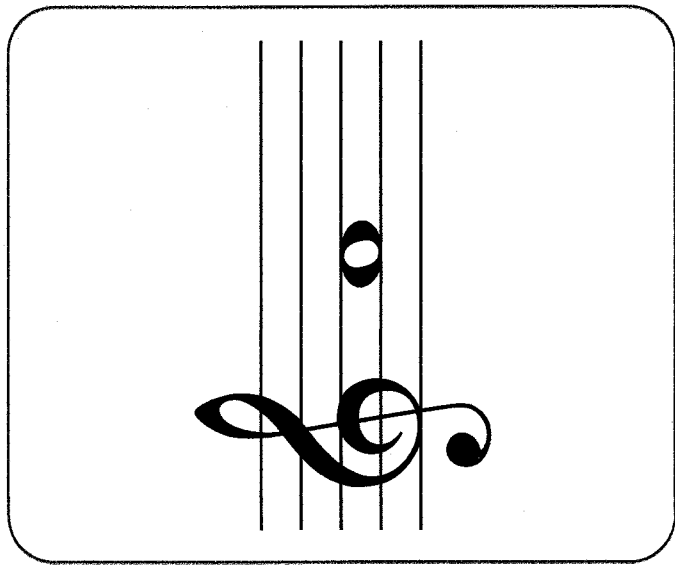
Answer Key

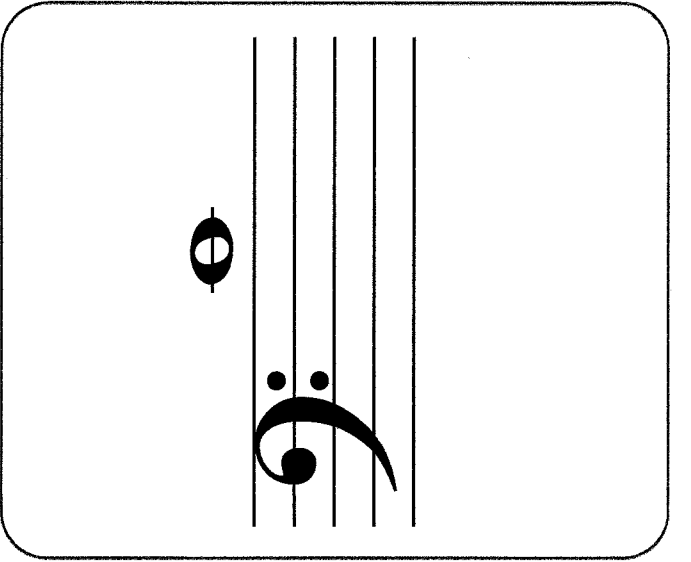
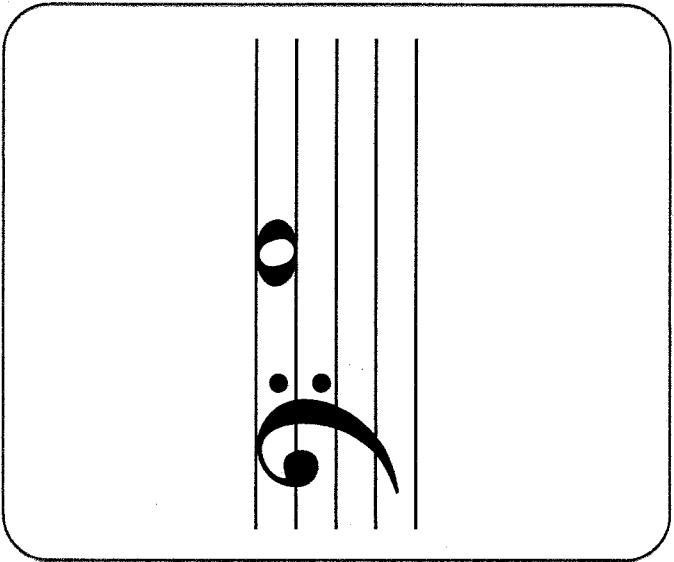
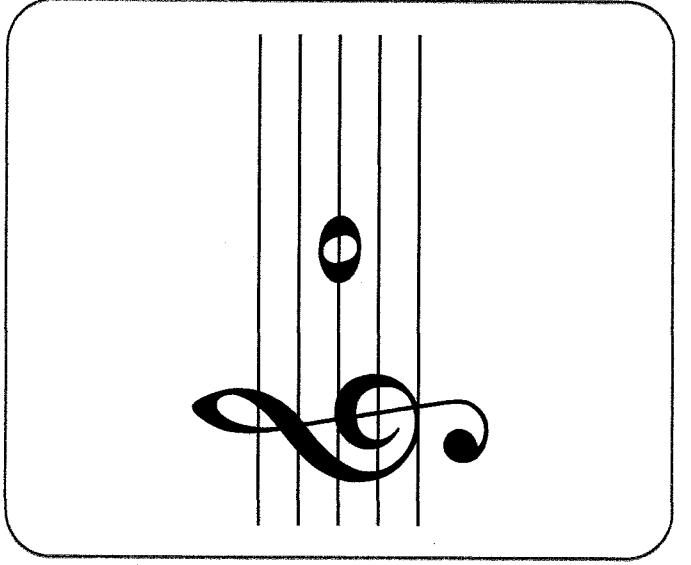
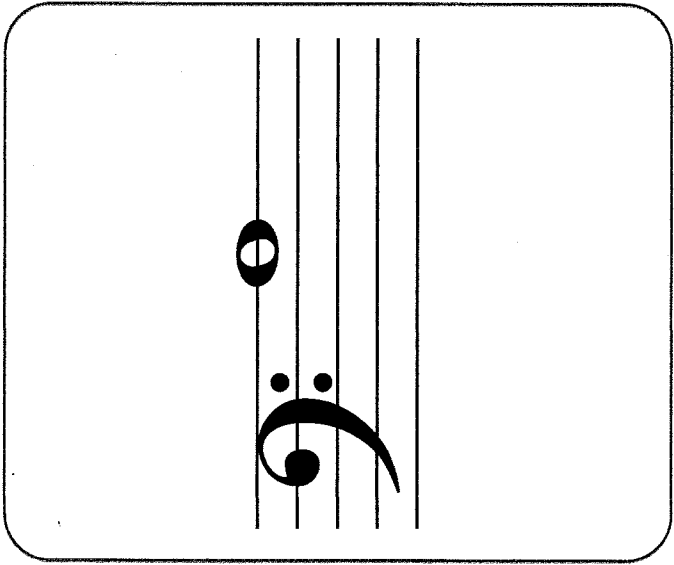
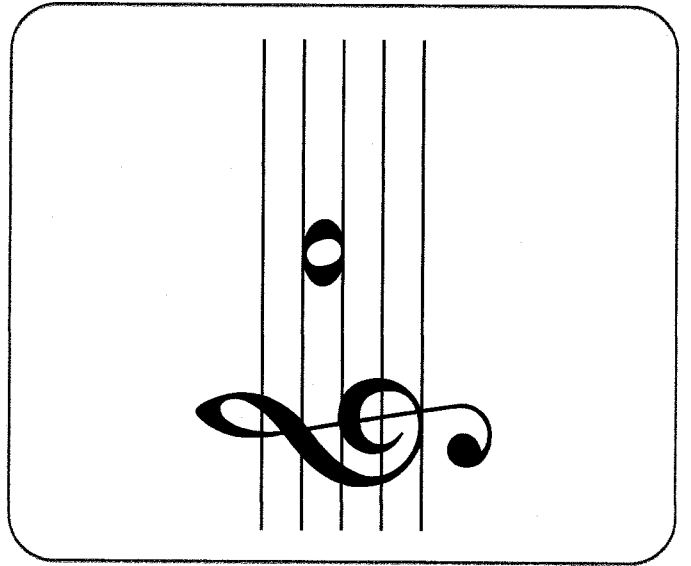
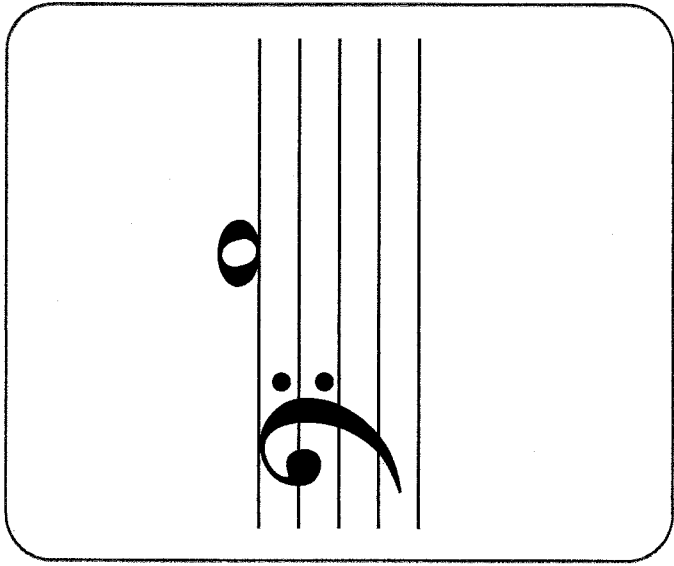


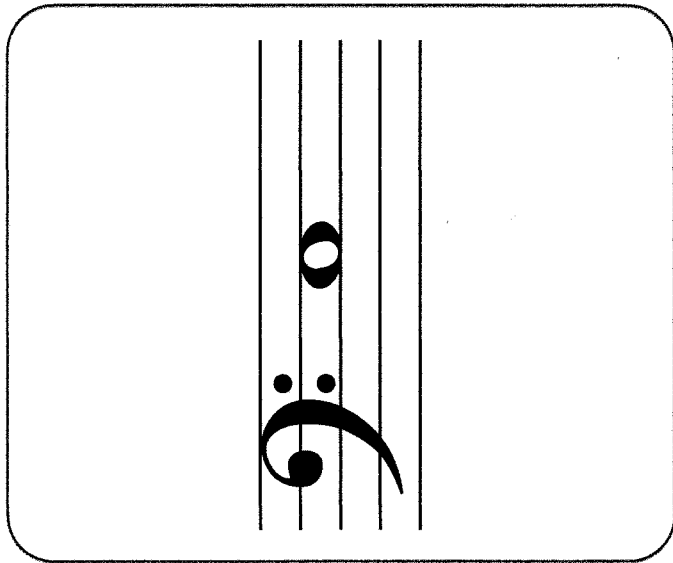
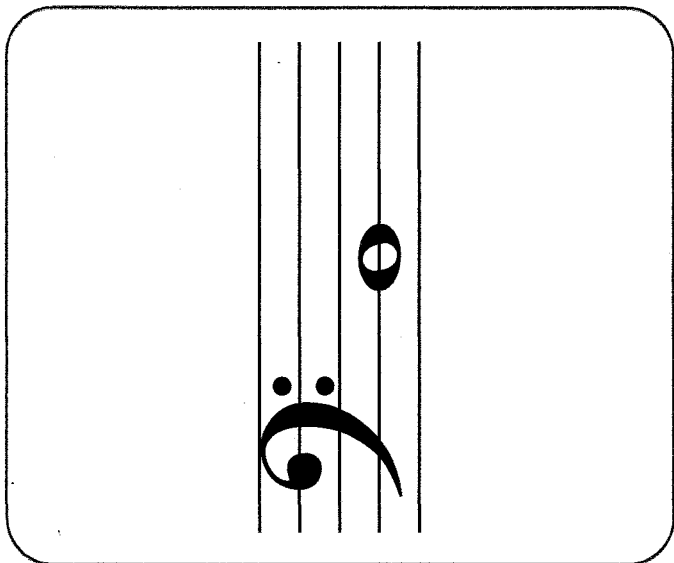
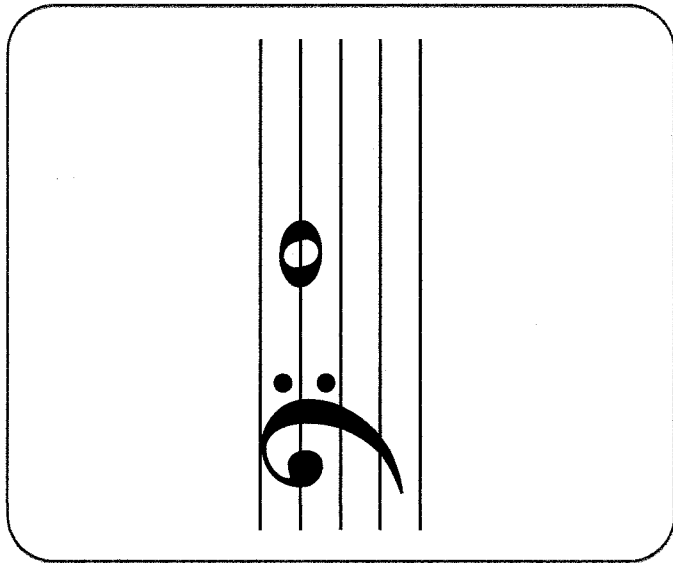
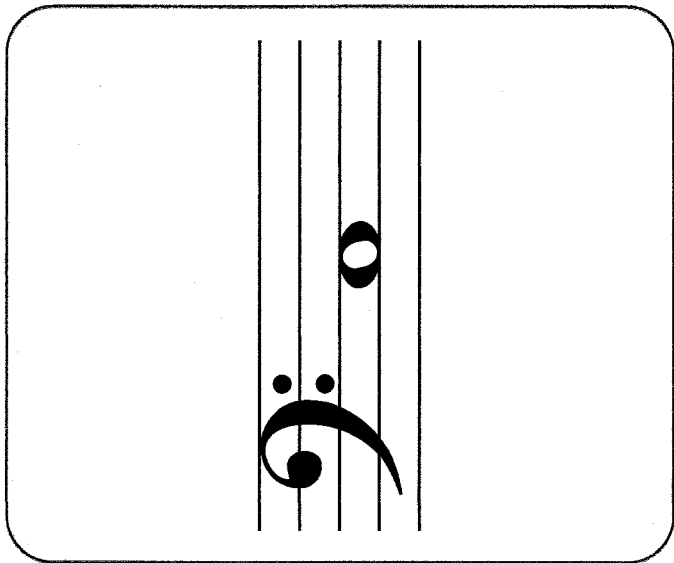
A musical staff with a treble clef. The notes are C, D, E, F, G, A, B, C, written below the staff lines. Below the staff, the letters C, D, E, F, G, A, B, C are printed vertically, corresponding to the notes above.




A musical staff with a bass clef. The notes are B, C, D, E, F, G, A, B, C, written below the staff lines. Below the staff, the letters B, C, D, E, F, G, A, B, C are printed vertically, corresponding to the notes above.







Bass Clef
Flash Cards



www.makingmusicfun.net

