

Answer Key - Platinum

A B C D E F G A B C D E F G A B C

C D E F G A B C D E F G A B C D E

Flash Card Levels:

Bronze = All Cards with 4 Stars

Silver = All Cards with 4 Stars + All Cards with 3 Stars

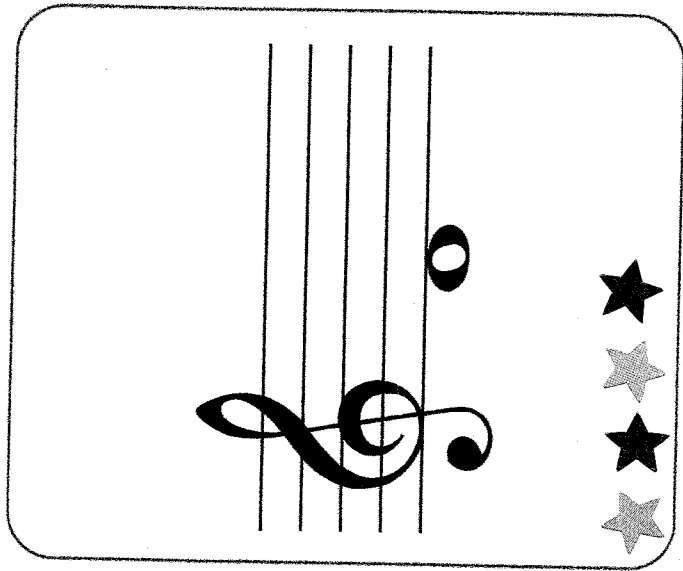
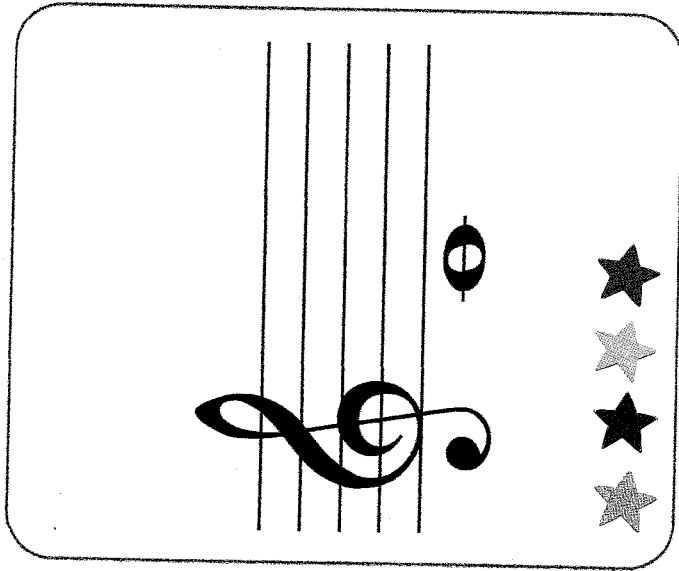
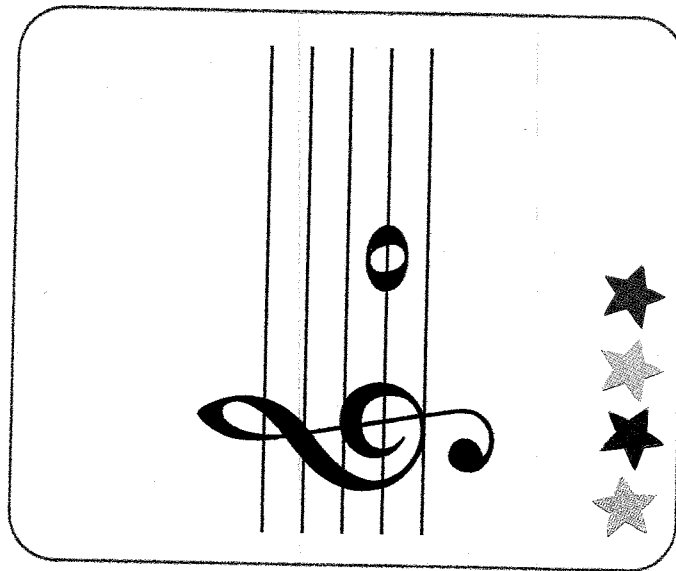
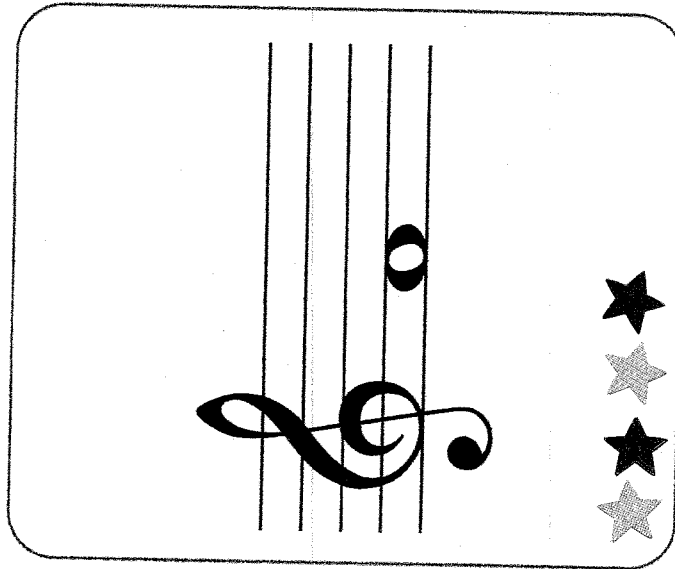
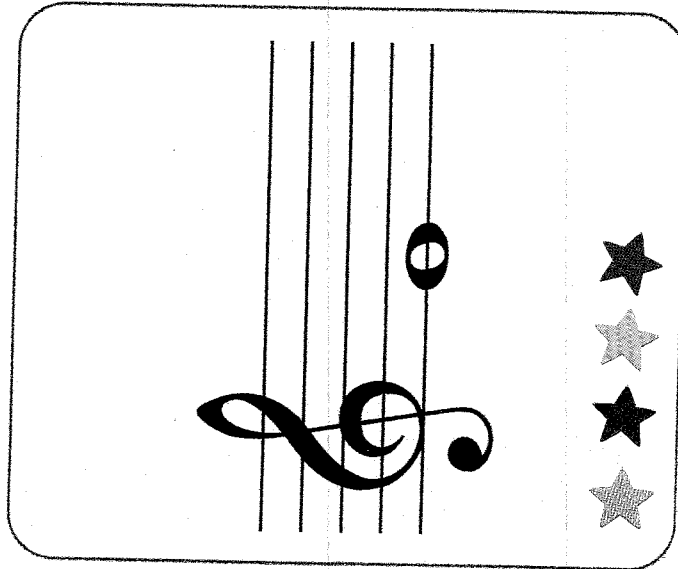
Gold = All Cards with 4 Stars + All Cards with 3 Stars + All Cards with 2 Stars

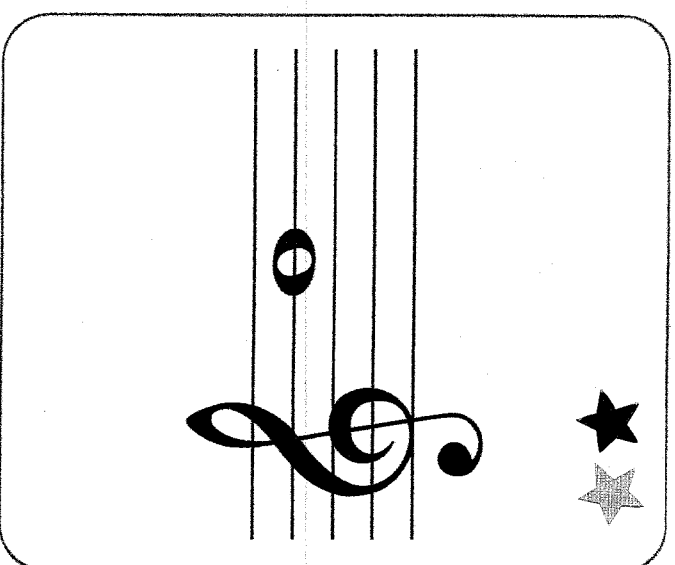
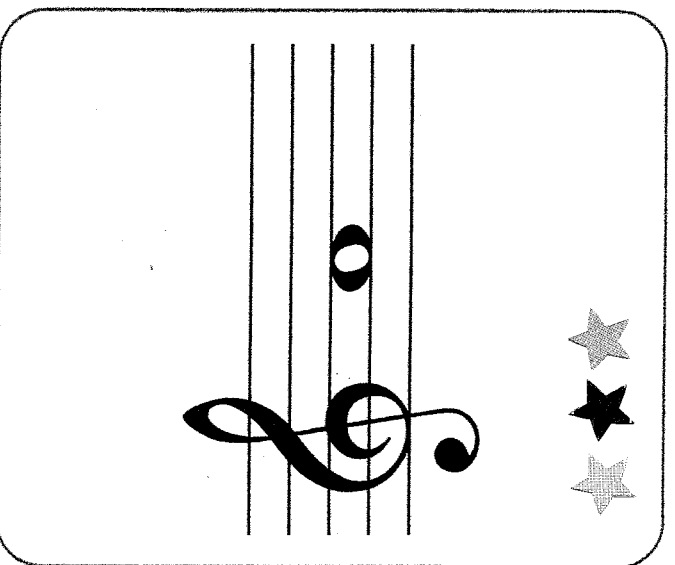
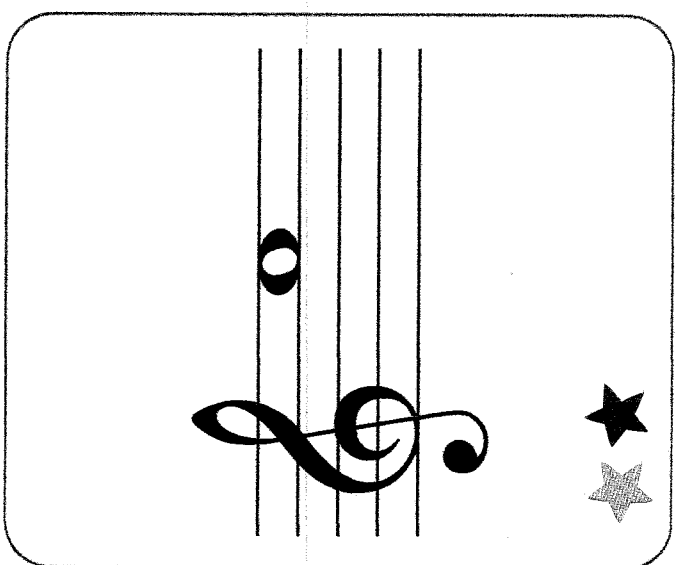
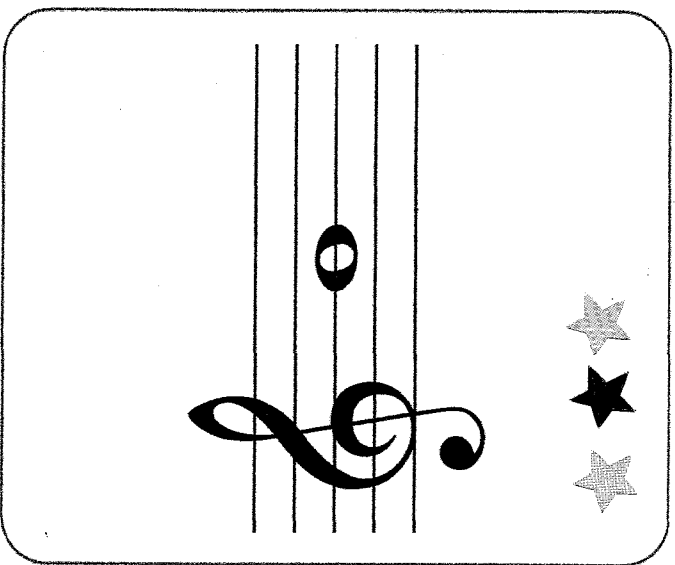
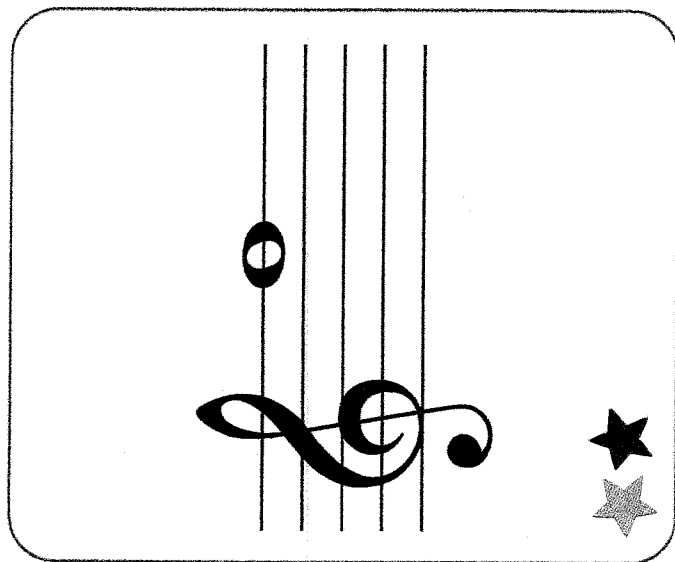
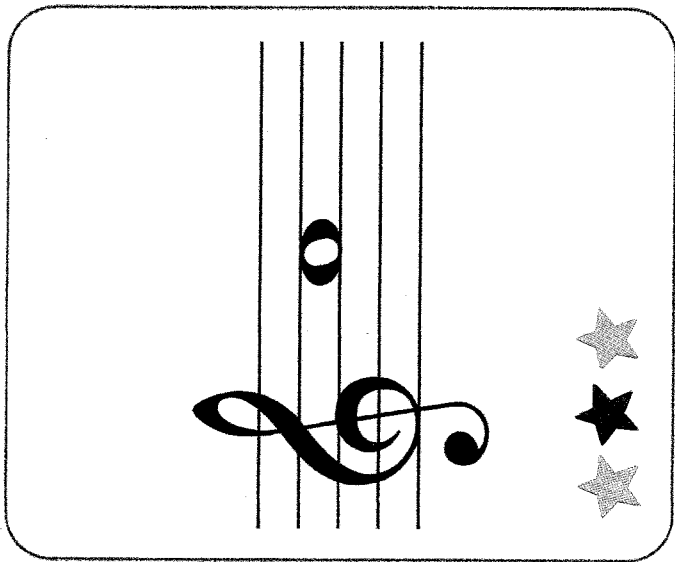
Platinum = All the Cards (1,2,3 and 4 Stars)

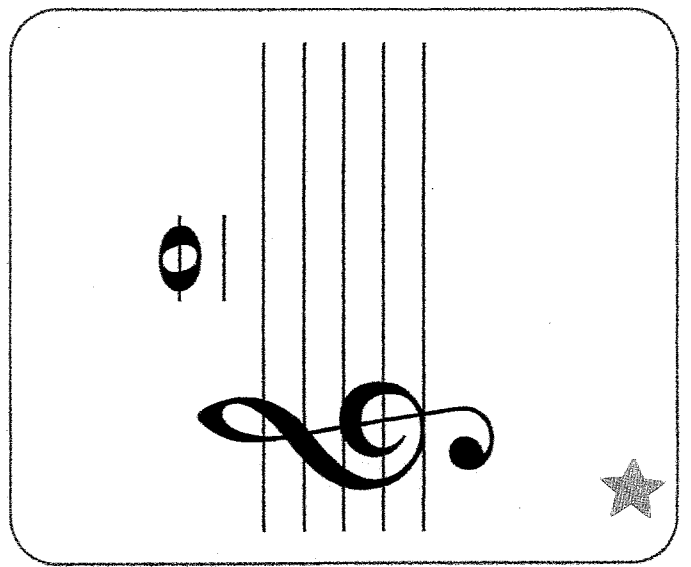
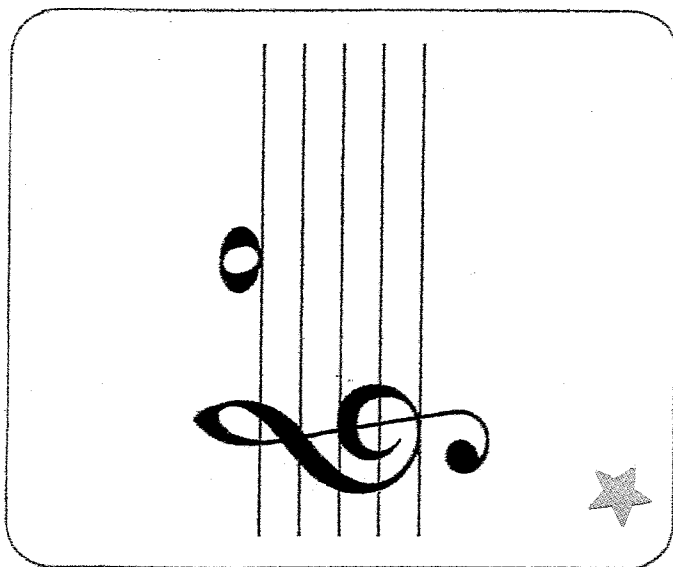
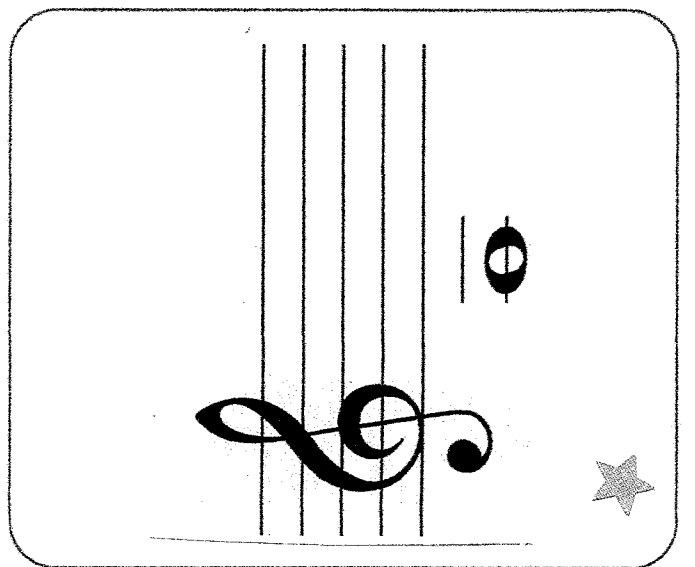
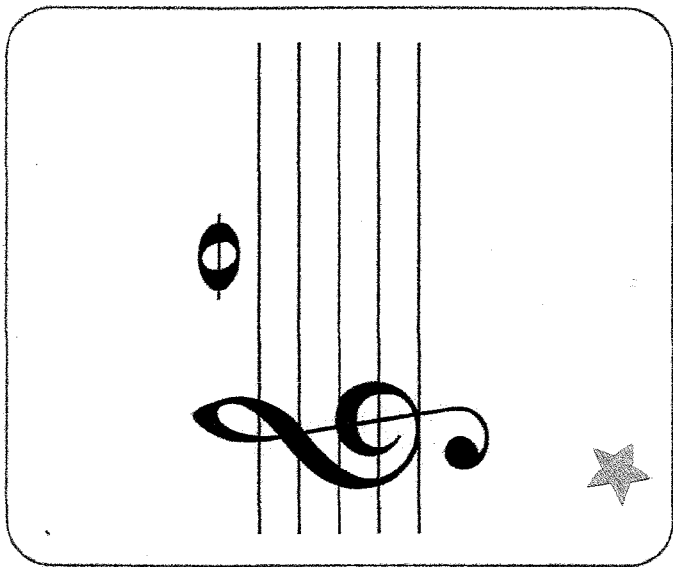
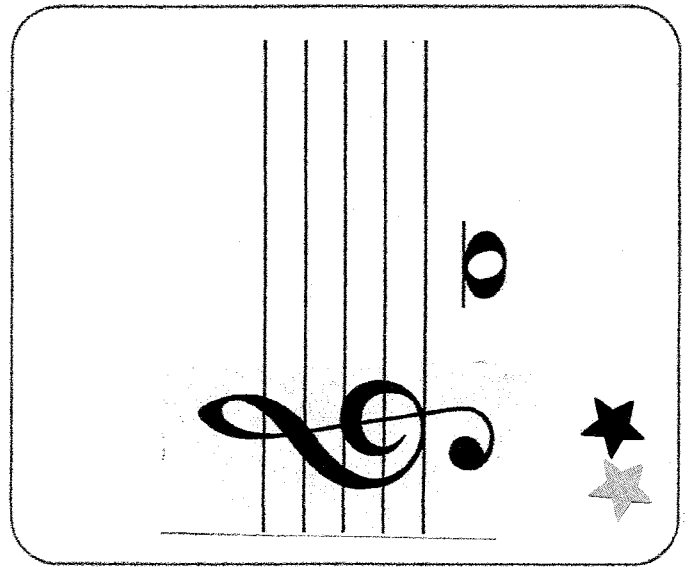
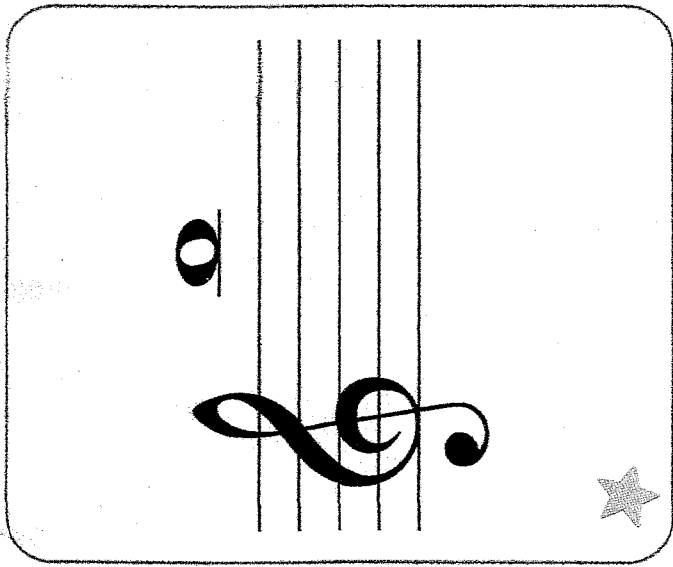
To help sort cards at home you can colour the stars at the bottom of each card in the following order of colours: Platinum, Gold, Silver, Bronze.

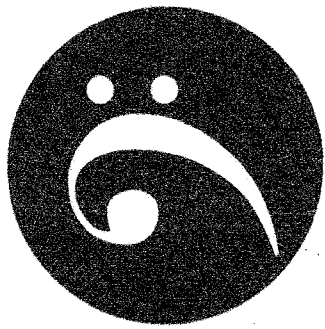
Each level is cumulative: it keeps the cards from the level before and adds new notes. By the Platinum level the whole set of cards is used therefore a Platinum star is on every card.

Answers: Note names can be written on the back of each card using the attached Answer Key.









Bass Clef
Flash Cards



www.makingmusicfun.net

